

# aniling

*accelerating epigenomics*

End-to-end solutions  
for the right treatment decisions in oncology

Llorenç Coll, CEO

[lcoll@aniling.com](mailto:lcoll@aniling.com)

September 2020

# CANCER

Every cancer patient must be treated differently

aniling

## LEUKEMIA



✓ Leukemia is a very heterogeneous disease

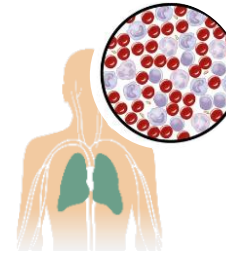


✓ Each patient will need several lines of treatment



✓ There is a need for tests to allow us to identify the best treatment for each patient

## ANILING



✓ Technology to analyse different types of cancer



✓ Products to classify leukemia patients and to improve treatment

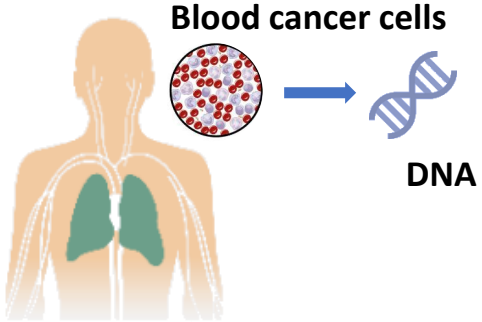


✓ Solution easy to be implemented by molecular diagnostic laboratories

# CURRENT SOLUTIONS






Need for Integrative test for Actionable and Accurate clinics

aniling



aniling

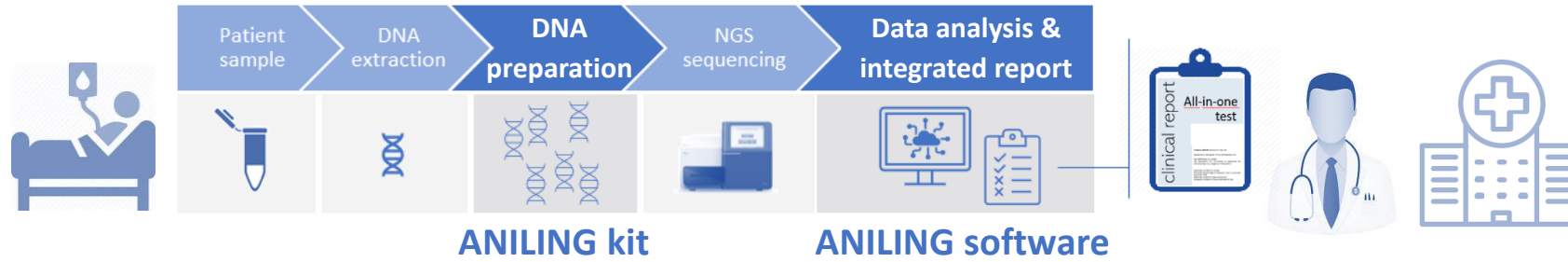


	Alternative 1	Alternative 2	Alternative 3	Alternative 4	Alternative 5	Alternative 6	
GENE alterations 	X	X	✓	✓	✓	X	✓
CHROMOSOME alterations 	✓	✓	X	X	✓	X	✓
EPIGENETIC alterations 	X	X	X	X	X	✓	✓
ACTIONABLE diagnosis 	partial	partial	partial	partial	partial	X	✓
ACCURATE prognosis 	partial	partial	partial	partial	partial	X	✓

# ANILING SOLUTION

## Value Proposition

aniling



↑ probability of surviving cancer  
↑ quality of life



↓ time to best treatment decision  
↓ complications and re-hospitalization



↓ costs in Public and Private Health  
(tests and treatments)

# aniling

*accelerating epigenomics*

Llorenç Coll, CEO

lcoll@aniling.com

End-to-end solutions  
for the right treatment decisions in oncology