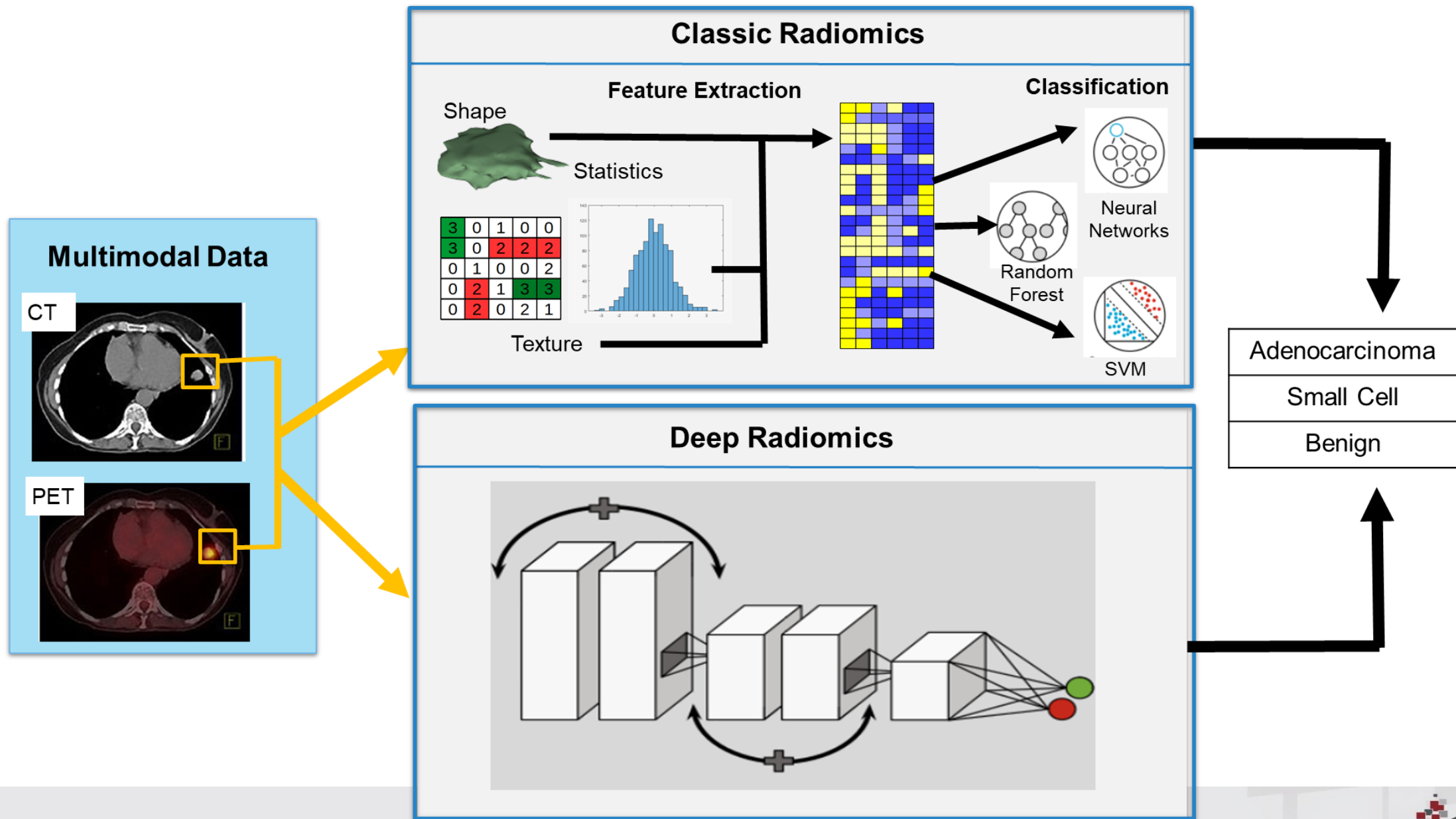


Up4Health. Intelligent Radiomics for early diagnosis of lung pathologies

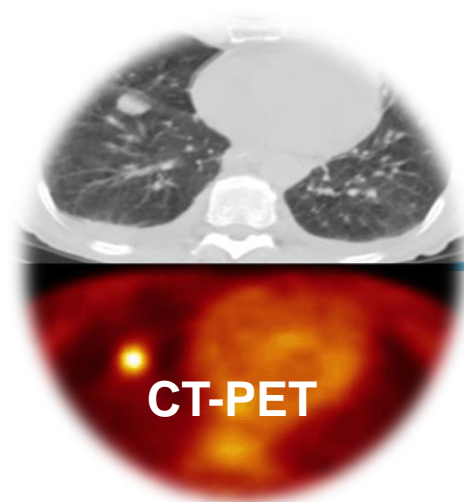


Systems for Intelligent Radiomics

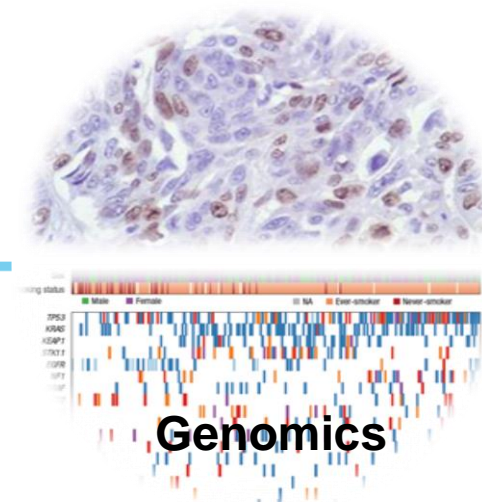


Early diagnosis of lung pathologies using multimodal data

Lung Cancer Screening



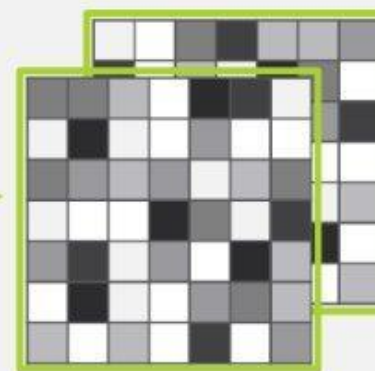
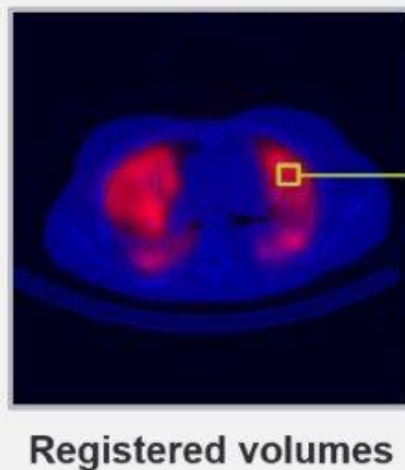
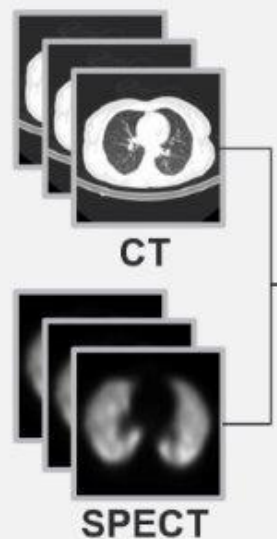
Poblational Issues



Data acquisition

Data fusion

Intelligent Radiomic Diagnosis



Radiomic features



Detection of Pulmonar TromboEmbolism (Covid)

Intelligent radiomics deployed as a Diagnosis as a Service can facilitate access to AI technologies in clinical premises without extra expenses for hardware acquisition or licensing.

Our DaaS solution includes High Performance Computing HW-accelerated (GPU, FPGA) platforms to efficiently deal with the 3D Multimodal Data Volumes

